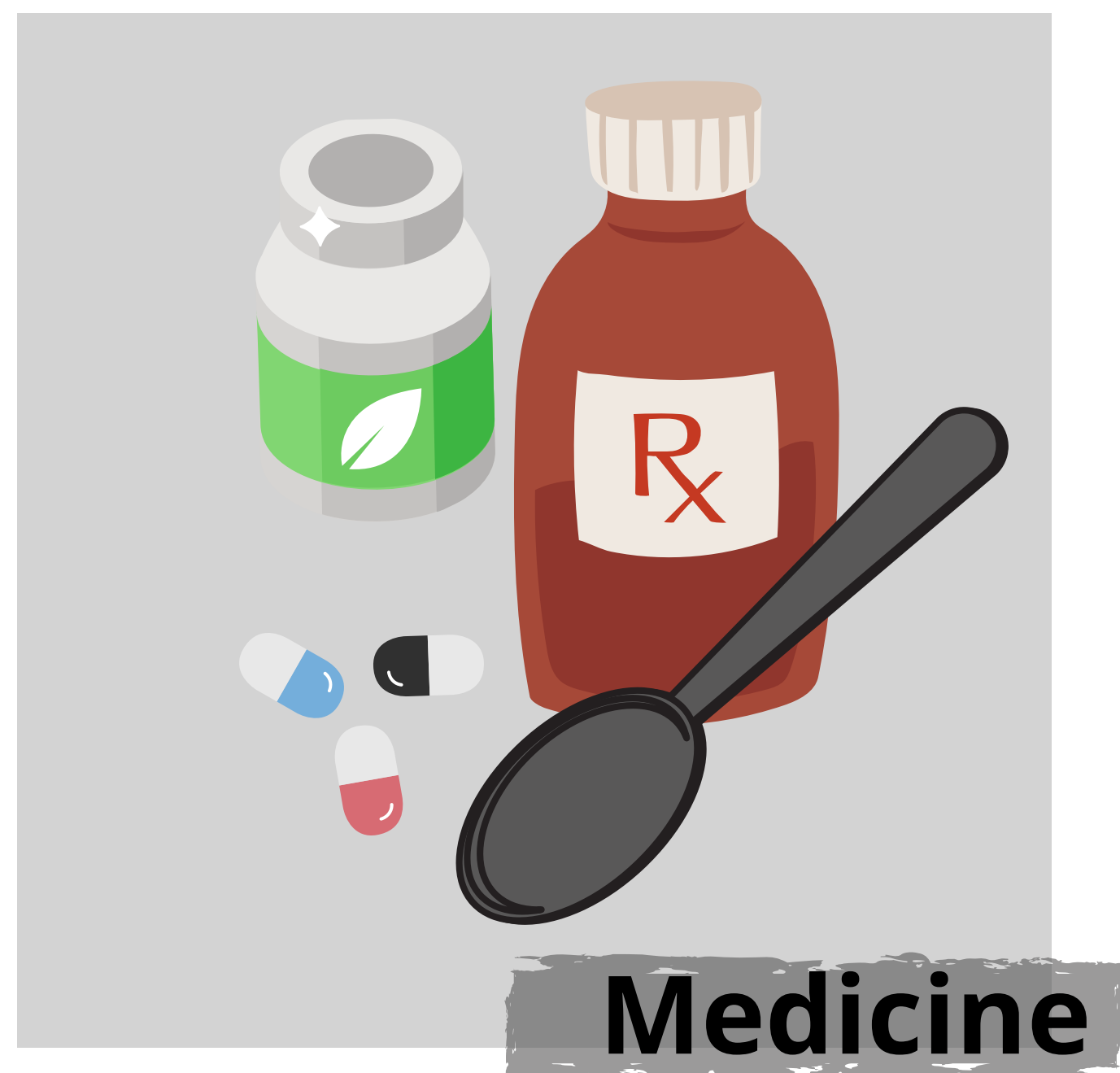
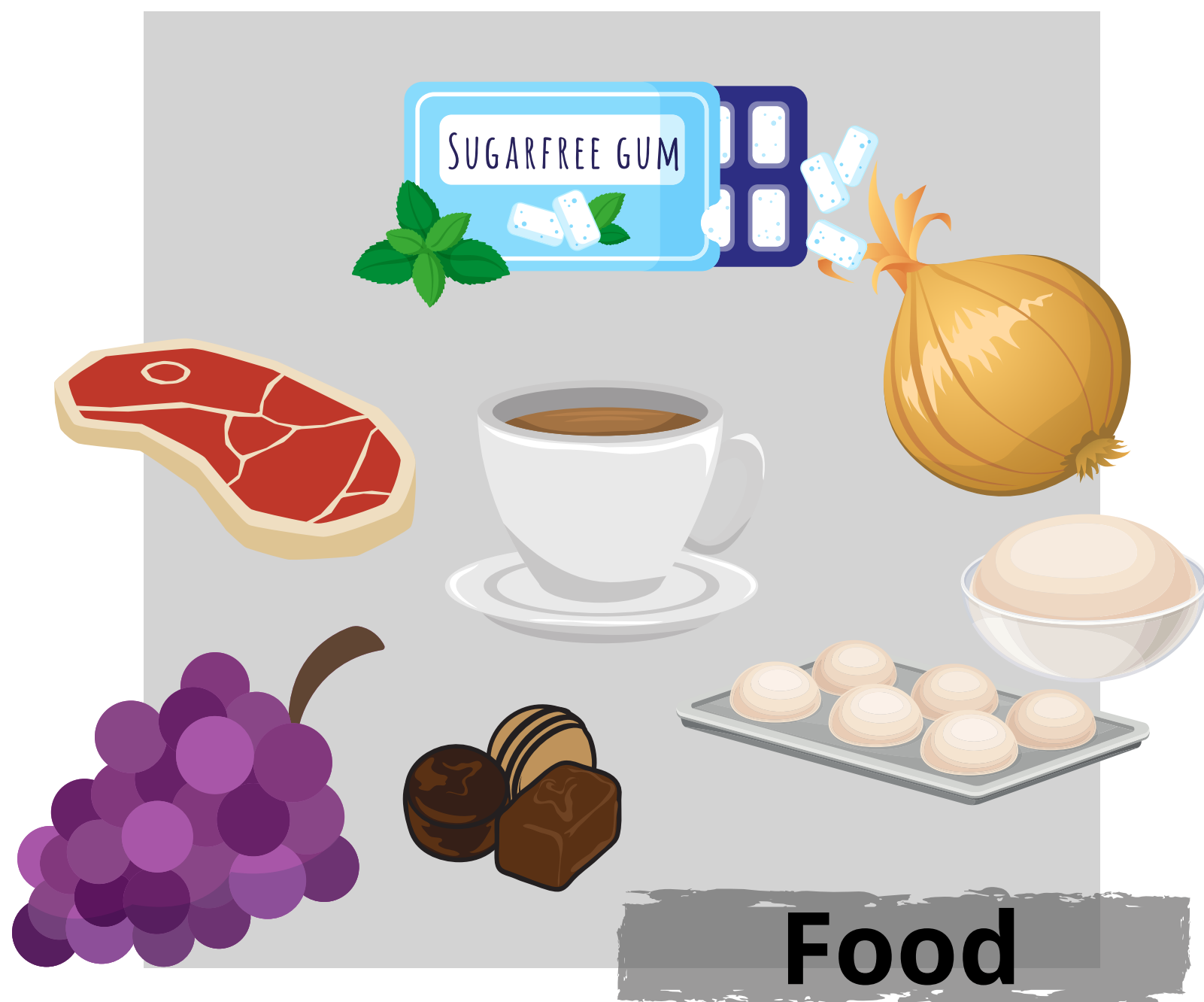


# WHAT ARE THE MOST COMMON HOUSEHOLD TOXINS FOR PETS?



- sugar free gum
- chocolate
- cough syrups
- onions and garlic
- raw dough
- anti-inflammatory
- caffeine
- raw meat
- herbal medications
- grapes
- prescription medication
- fertilizer
- pesticide
- antifreeze
- rodenticide
- glue
- lilies
- dafodils
- hyacinth
- tulips

**The American Society for the Prevention of Cruelty to Animals (ASPCA) Animal Poison Control Center is open 24 hours a day, 365 days a year, to advise pet owners about potential pet toxicities.**

If you think your pet may have ingested a potentially poisonous substance, you can reach the ASPCA hotline at **(888) 426-4435**.

**Animalhospital**  
of Cambridge  
**EMERGENCY**

